



G-LEDTM CASE STUDY

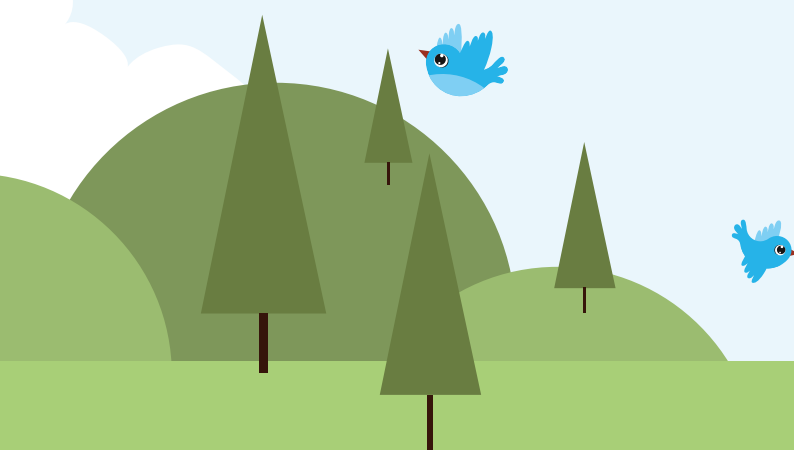
PLAYBOX THEATRE - WARWICKSHIRE

Acclaimed as the best 'The best Children's and Young People's theatre in the world, The Playbox Theatre in Warwick wished to upgrade their existing lighting to energy efficient LED lighting to help reduce costs but also to help achieve their sustainability aims.

GET Solutions reduced the power consumed at Plaxbox by over 25,000 kWh's a year by installing high-quality LED lighting and in doing so also reducing their carbon footprint, by saving the equivalent of one and a half double decker buses a year in carbon.

GET Solutions also arranged for the Theatre to receive the Green Business Fund which was available from the Carbon Trust until December 2019 and this saved £2,800 off the cost of the project.

By utilising the innovative G-FUNDTM funding mechanism, the Theatre immediately benefitted from the great savings in energy costs, safe in the knowledge they have done their bit to fulfill their green responsibility and support the fight against climate change.



238
Fittings

SAVED
25,000
kWh's PA

